

# Stop the Spread of Spotted Lanternfly by Using This Checklist

Photo: PA Dept. of Agriculture,  
Bugwood.org



If you've spent any time in a Spotted Lanternfly quarantine area\* in DE, NJ, PA and VA, it's important to check for egg masses, adults, and nymphs on your vehicle and, when applicable, the items listed on this page.

The New York State Departments of Agriculture & Markets, and Environmental Conservation consider the following items high priority:

- motor homes
- recreational vehicles
- trailers
- tarps
- firewood including logs & stumps
- wooden crates and boxes
- mobile fire pits
- outdoor furniture and covers
- landscape tiles and stones
- construction waste
- any plant material: yard waste, brush, nursery stock
- bar-b-que grills and covers
- lawnmowers and mowing decks
- boats and trailers

---

## In addition:

### Recreational and Camping Gear

- backpacks
- basketball backboards
- bicycles
- campers
- ice chests
- motorcycles
- snowmobiles
- tents
- canopies

---

### Outdoor Items

- barrels
- cardboard
- outdoor poles
- plant containers
- propane or oil tanks
- trash cans
- garden carts
- refrigerators and freezers
- storage sheds
- shutters
- cold frames
- fencing
- garden tillers
- yard decorations
- garden tools
- backhoes
- signs and posts
- children's playhouses
- kiddie pools
- sandboxes
- playground equipment
- bicycles and scooters
- dog houses, rabbit sheds, chicken coops
- farm tractors & equipment

---

### Building Materials

- bricks/cinder blocks
- lumber
- metal
- roofing material
- tools and toolboxes
- workbenches
- skidsteers/forklifts
- pipes
- glass
- plastic

## If you find Spotted Lanternfly in New York:

1. Take pictures of the insect, egg masses, or infestation and, if possible, include something for size, such as a coin or ruler.
2. If possible, collect the insect. Place in a bag and freeze, or in a jar with rubbing alcohol or hand sanitizer.
3. Note the location (street address and zip code, intersecting roads, landmarks, or GPS coordinates).
4. **Email pictures and location to [spottedlanternfly@dec.ny.gov](mailto:spottedlanternfly@dec.ny.gov) OR fill out the form at: [nysdec.maps.arcgis.com/apps/GeoForm/index.html?appid=41ca19850b734e2faa3332ae36383720](https://nysdec.maps.arcgis.com/apps/GeoForm/index.html?appid=41ca19850b734e2faa3332ae36383720), which includes specimen information.**
5. For more information, visit the New York State Department of Environmental Conservation website: [dec.ny.gov/animals/113303.html](https://dec.ny.gov/animals/113303.html)



Spotted lanternfly adult.



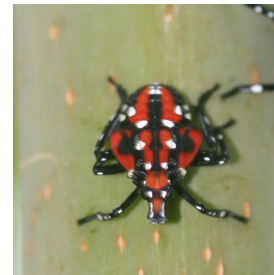
Spotted lanternfly adult.



Spotted lanternfly adults and egg masses.



Spotted lanternfly early instar nymph. Photo: E. Swackhamer, Penn State Extension



Spotted lanternfly late instar nymph.

### \*Quarantine areas as of December 2018:

**Delaware:** New Castle County

**New Jersey:** Hunterdon, Mercer & Warren Counties

**Pennsylvania:** Berks, Bucks, Carbon, Chester, Delaware, Lancaster, Lebanon, Lehigh, Monroe, Montgomery, Northampton, Philadelphia, and Schuylkill Counties

**Virginia:** Frederick County

### Spotted lanternfly has been seen in:

**Connecticut:** Hartford County

**Delaware:** Kent County

**Maryland:** Cecil County

**New York:** Albany, Chemung, Delaware, Monroe, Suffolk and Yates Counties, as well as the Boroughs of Brooklyn and Manhattan in New York City

**Pennsylvania:** Adams, Centre, Dauphin, Juniata, Lackawanna, Luzerne, Mifflin, Northumberland, Perry, Tioga, Wyoming, and York Counties.

**Note: Businesses/truckers/common carriers moving items from a quarantine area must complete a Spotted Lanternfly training and obtain a permit.**



**Agriculture  
and Markets**

**Department of  
Environmental  
Conservation**

This checklist was based on work done by Pennsylvania State University and the Pennsylvania Department of Agriculture.

Unless otherwise noted, all photos by Tim Weigle, NYS IPM. All NYS IPM photos may be used for educational purposes, with the credit line: Photo: NYS IPM.